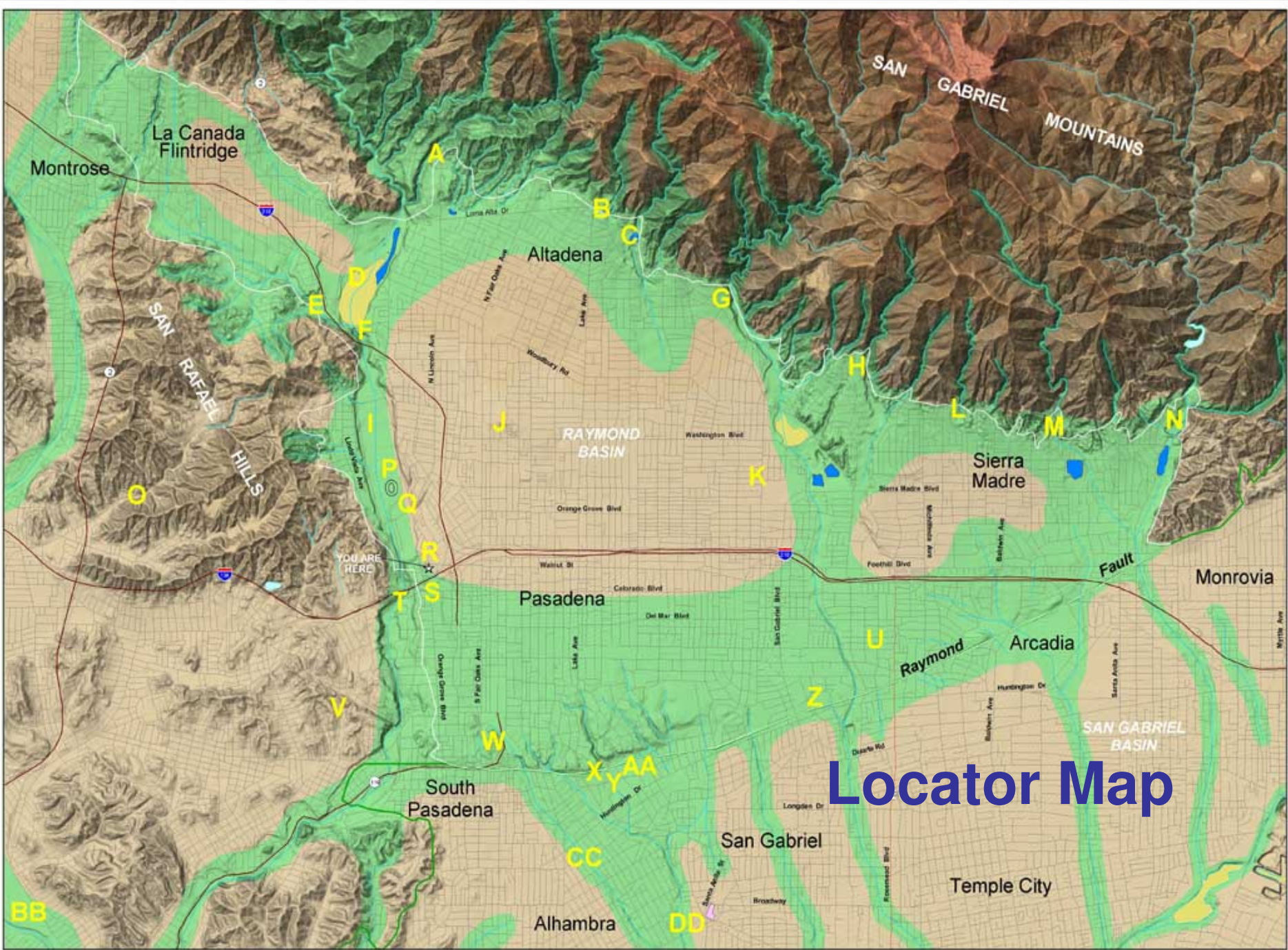


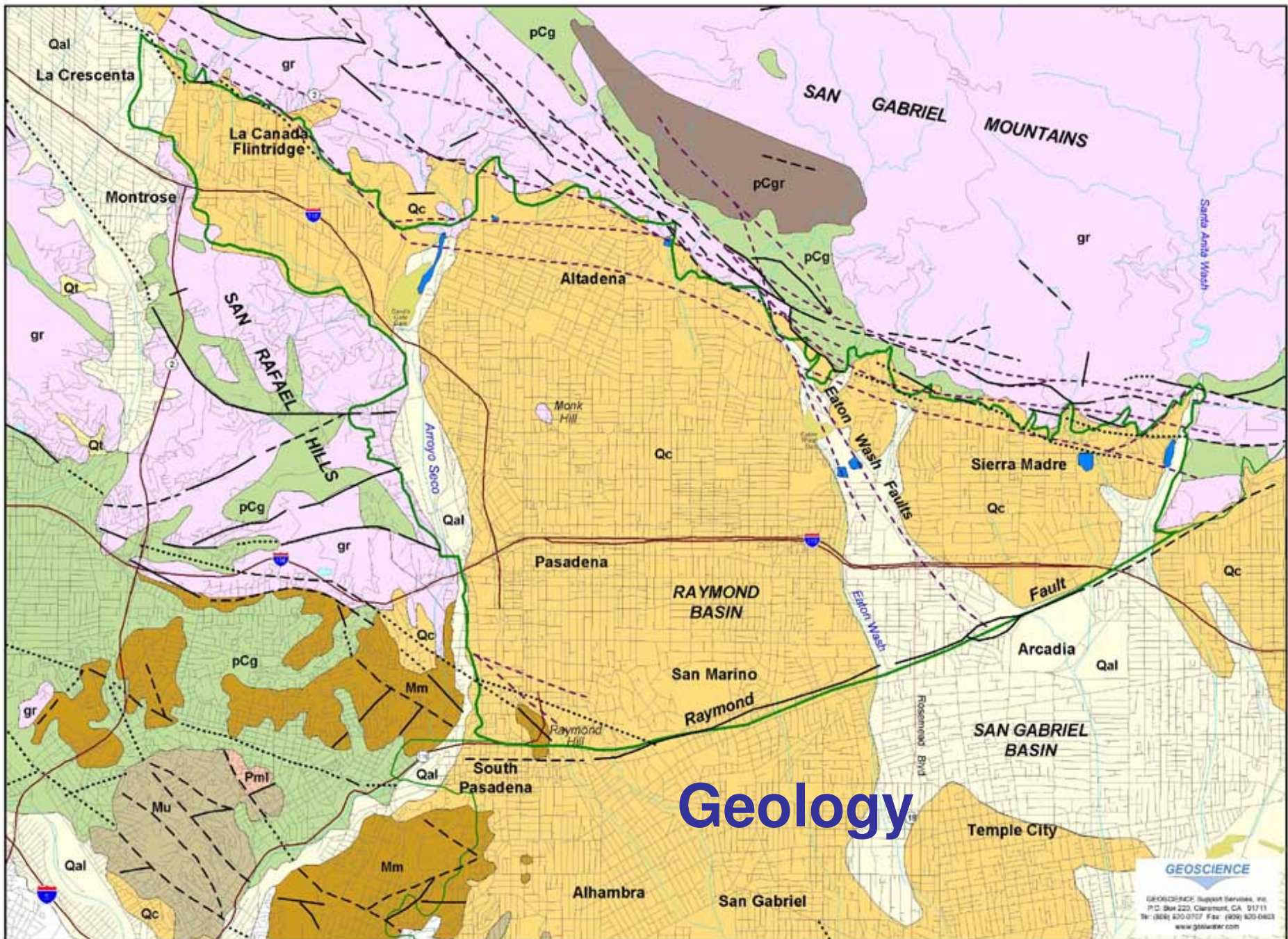


***Flowing Waters,
Fruitful Valley***

How Water Shapes Our Region



Locator Map



Geology

GEO SCIENCE

GEO SCIENCE Support Services, Inc.
 P.O. Box 220, Claremont, CA 91711
 Tel: (909) 820-0727 Fax: (909) 820-0803
www.giswater.com

US Geology and Earth Hazards from California Department of Water Resources (CDWR)
 "Map of California - Los Angeles Basin" Date: 1/20/99, 1/19/98

US Geology and Earth Hazards from California Department of Water Resources (CDWR)
 "Map of California - Los Angeles Basin" Date: 1/20/99, 1/19/98



Falls

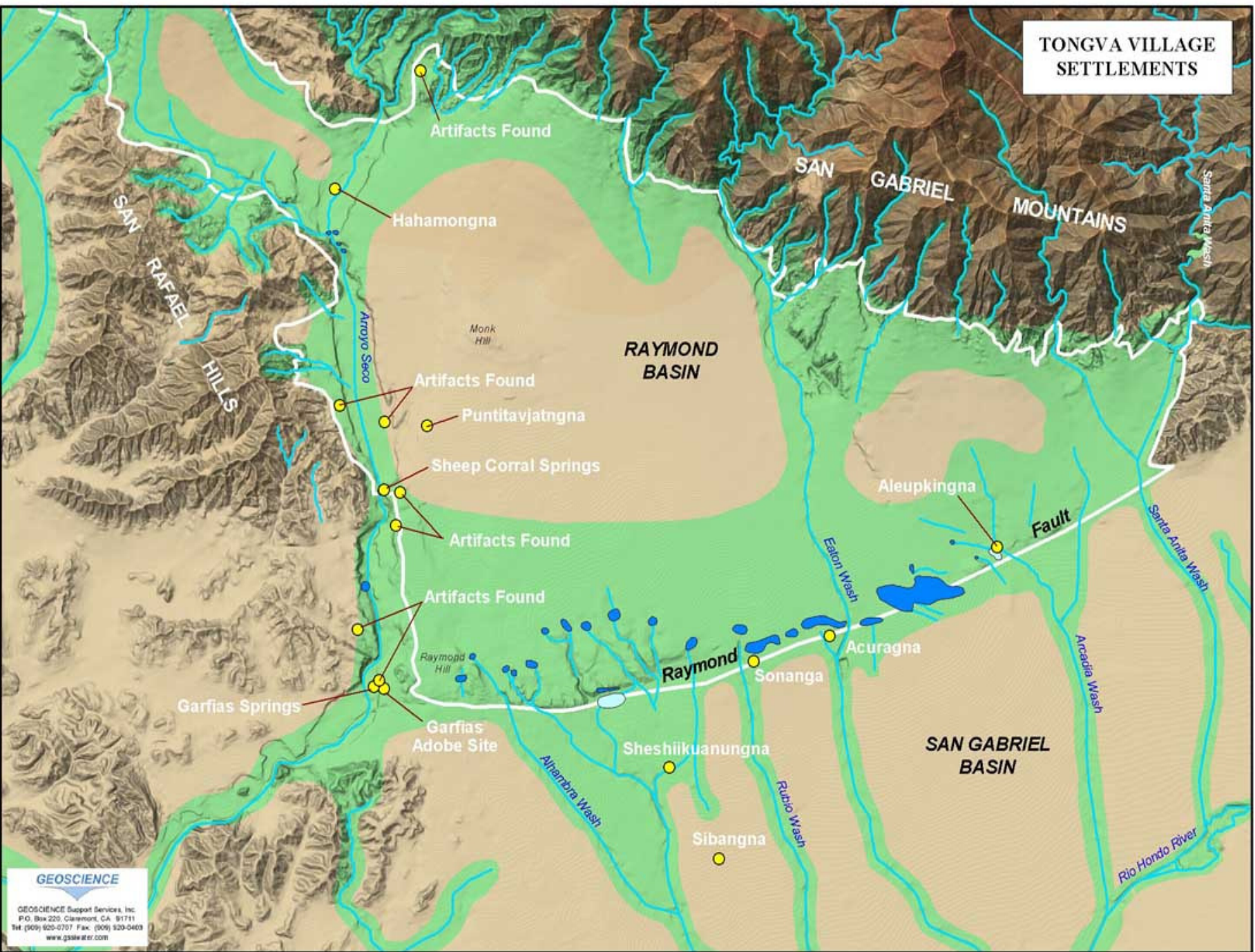




The Native Era



TONGVA VILLAGE SETTLEMENTS



GEO SCIENCE
GEO SCIENCE Support Services, Inc.
P.O. Box 220, Claremont, CA 91711
Tel: (909) 920-0707 Fax: (909) 920-0403
www.gssai.com

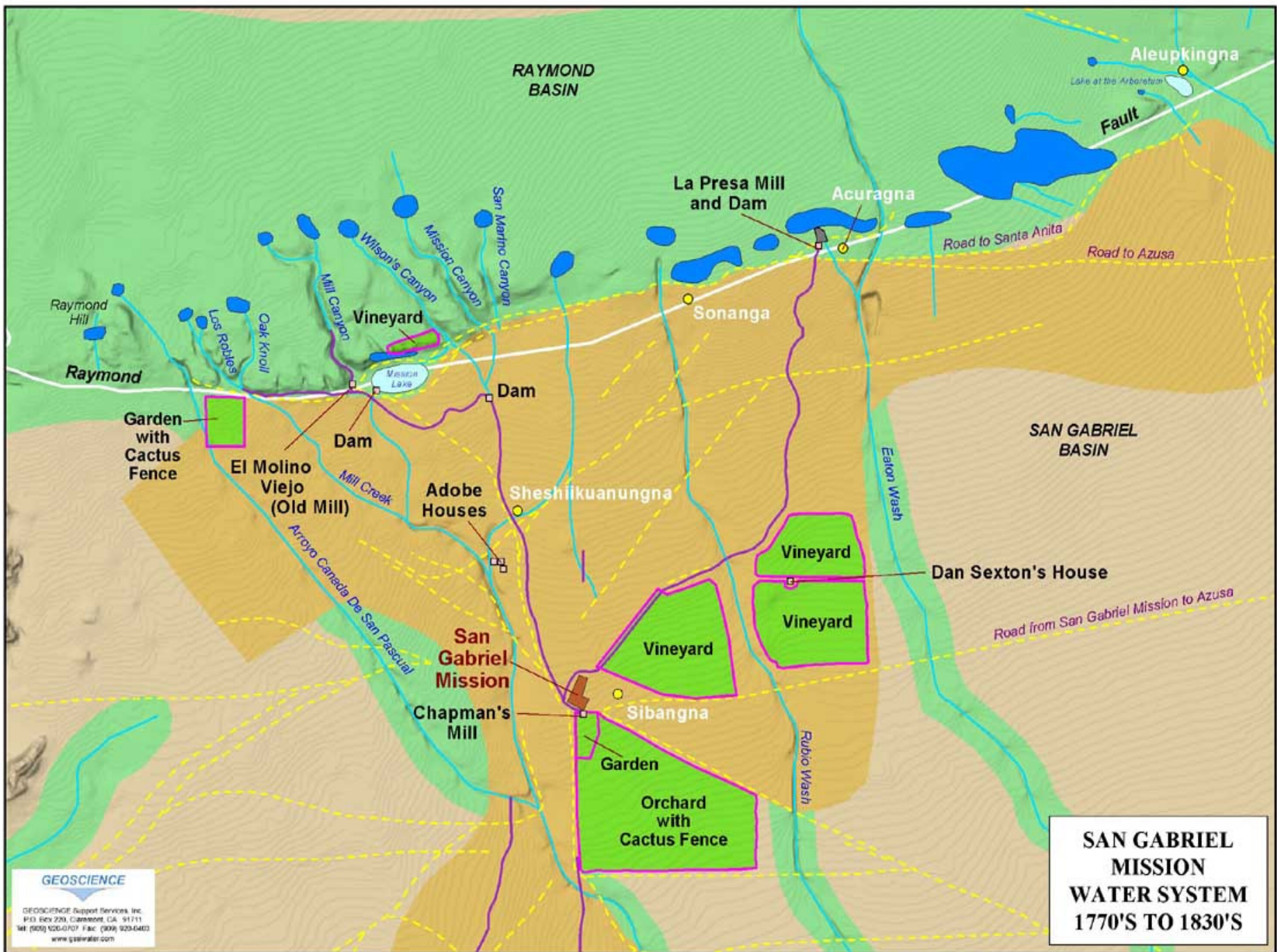
The Mission Era

" THE AQUEDUCT "
IN THE EARLY DAYS OF THE MISSION THE ONLY WATER SUPPLY CAME FROM WILSON LAKE. CRUDELY-BUILT CLAY PIPES BROUGHT THE WATER FROM THE OPEN DITCH TO THIS AQUEDUCT. FROM HERE THE WATER WAS PIPED TO THE TANNERY AND TO THE KITCHEN ON THE MISSION GROUNDS. MUCH ENGINEERING SKILL IS DISPLAYED IN THE BUILDING OF THIS WATER SYSTEM AND IT WAS FROM THESE CRUDE BEGINNINGS THAT THE DESERT LAND WAS MADE TO BRING FORTH AN ABUNDANCE OF FRUIT.





Joseph
Chapman



El Molino Viejo



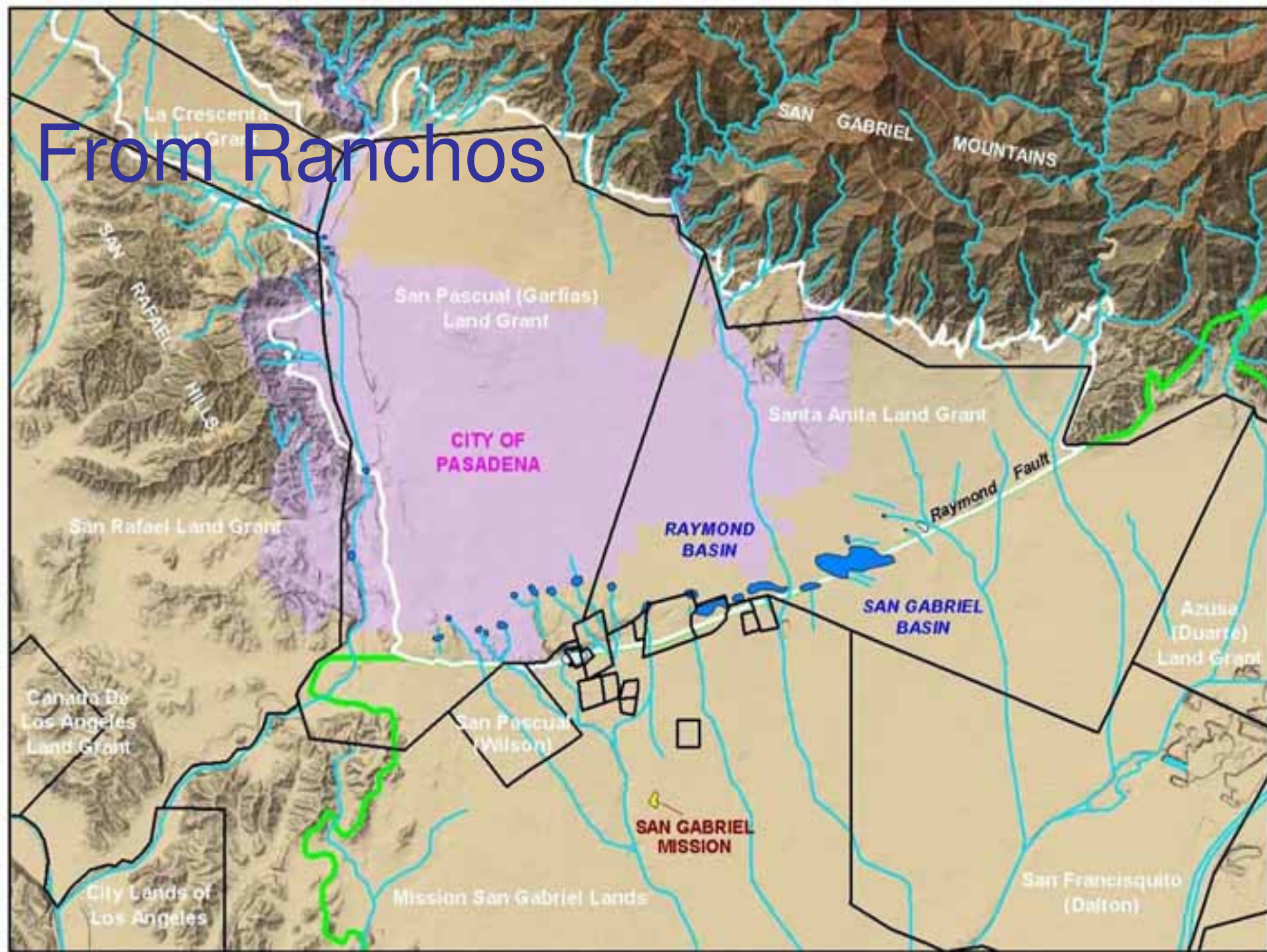


**SAN GABRIEL MISSION ASSETS
AT TIME OF CONFISCATION
November 1834**

- 1 weaving room with 4 looms for wool
- 1 room for making brandy with 4 stills
- 1 room for pressing grapes with 3 wine presses
- 1 forge for smelting
- 1 structure for making soap & tallow for candles
- 2 Water Mills, 1 half a league distant,
El Molino Viejo,
the other in front of Mission, Chapman Mill
- 163,578 vines in 4 vineyards
- 2,333 fruit trees in 9 orchards
- 12,980 head of cattle, 6,548 sheep, 2,036 horses,
cattle on loan, 4,443 head
- 227 volumes in Library of Franciscans
- Indian population of Mission comprises 1,323 souls
within Mission District & Rancho San Bernardino

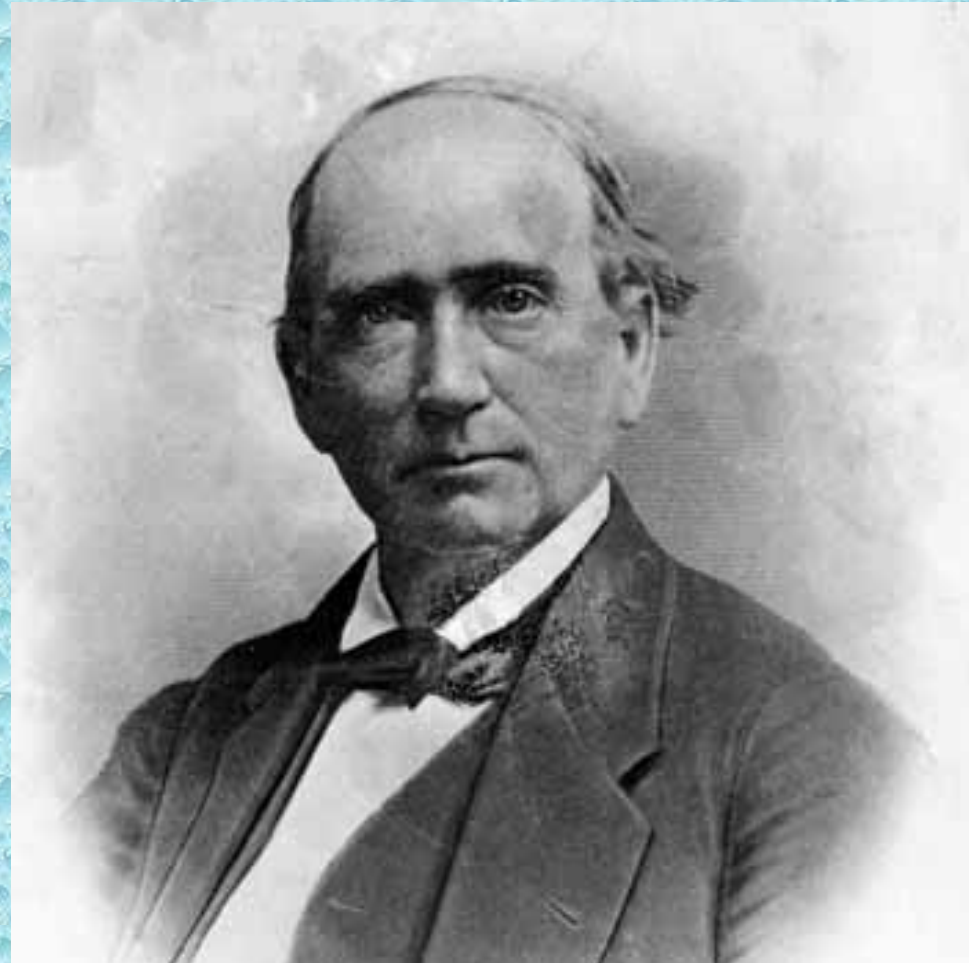
- Assets of Mission: 11,5412 reales
- Debt of Mission: 8,27175 reales
- Artillery belonging to Mission:
 - 2 cañones de a 4 mortales en medias
 - 1 cañon de fierro de a 2
 - 3 pedreros de fierro de a 2
 - 1 cañon de a 4(prestado al ayuntamiento de Los Angeles)

From Ranchos



To Ranches

**Lake Vineyard –
Don Benito Wilson**



To Ranches



Fair Oaks Ranch –

- Eliza Griffin Johnston
- Benjamin Eaton



To Ranches

**Sunny Slope Ranch
- Leonard J. Rose**



The New Colony



The Orange Grove Association





The First Fruit Fair - 1880



The Packing House

Shorb Ranch – 1880s



- Owens Valley Aqueduct
- Big Creek in the Sierras

Henry
Huntington





Mirror Lake, near Pasadena.



DEVILS GATE.



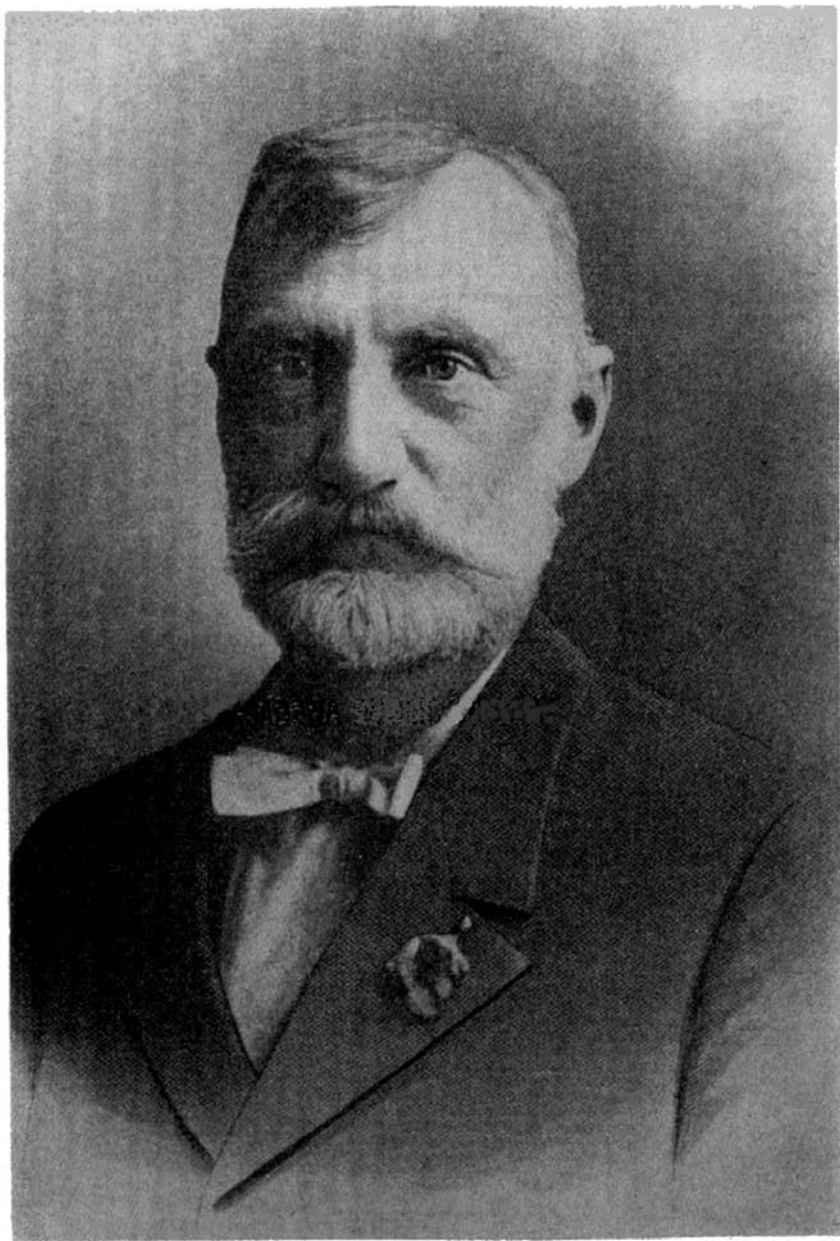
Land and Water Associations



Scoville Dam

Wilson Lake - 1903





Abbot Kinney

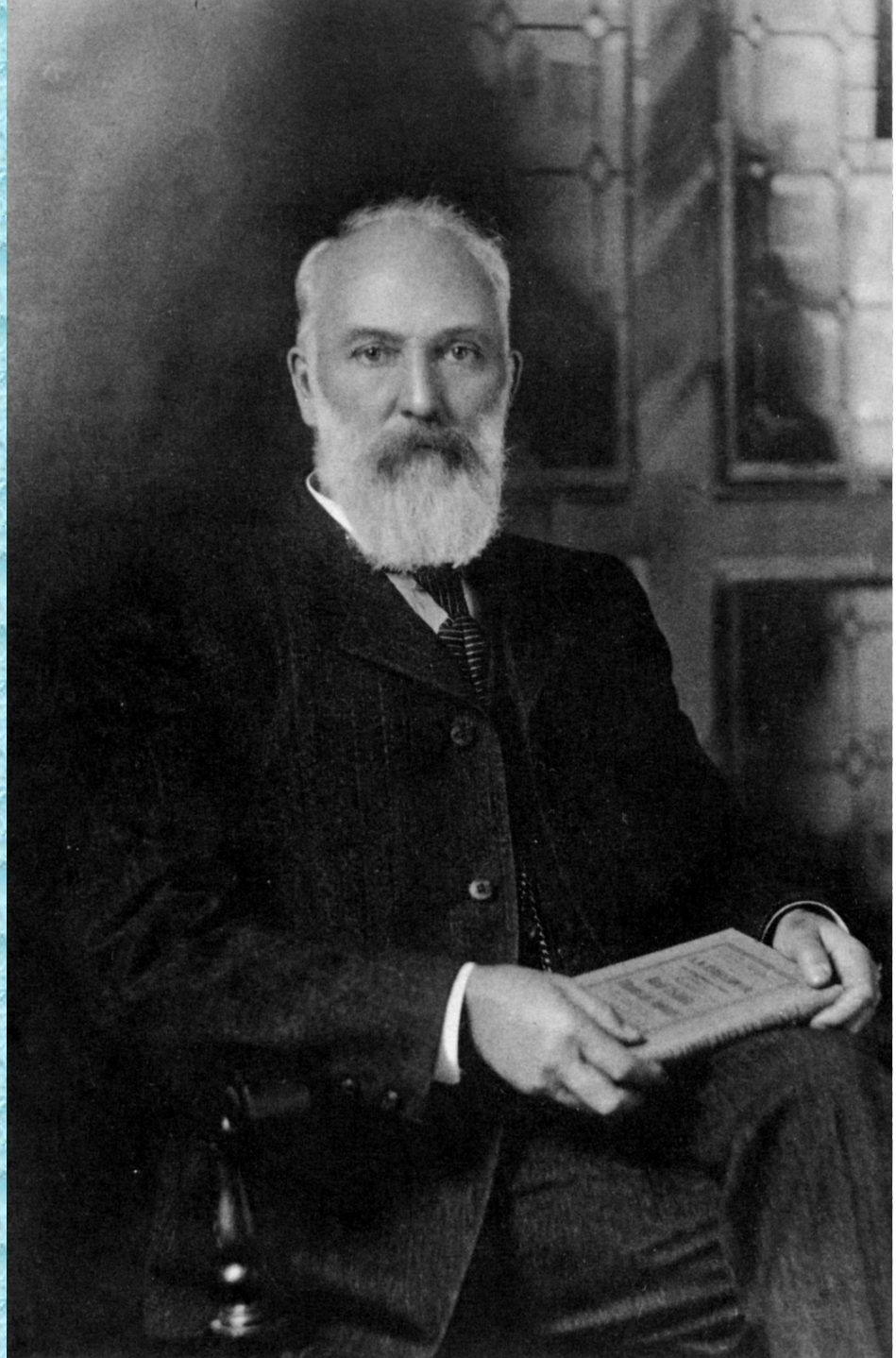
Abbot Kinney

“California is especially likely to be greatly injured, if not altogether ruined as a home for any considerable population, if proper measures are not taken to preserve her forests and watersheds.”

Theodore Lukens

“Pasadena does not need to look elsewhere for water now or in the future, if she will take care of the watershed from which her supply of water now comes.”

- 1911





GEO SCIENCE

GEOSCIENCE Support Services, Inc.
P.O. Box 22, Orem, UT 84057
Tel: 801-224-8117 Fax: 801-224-8118
www.geosci.com

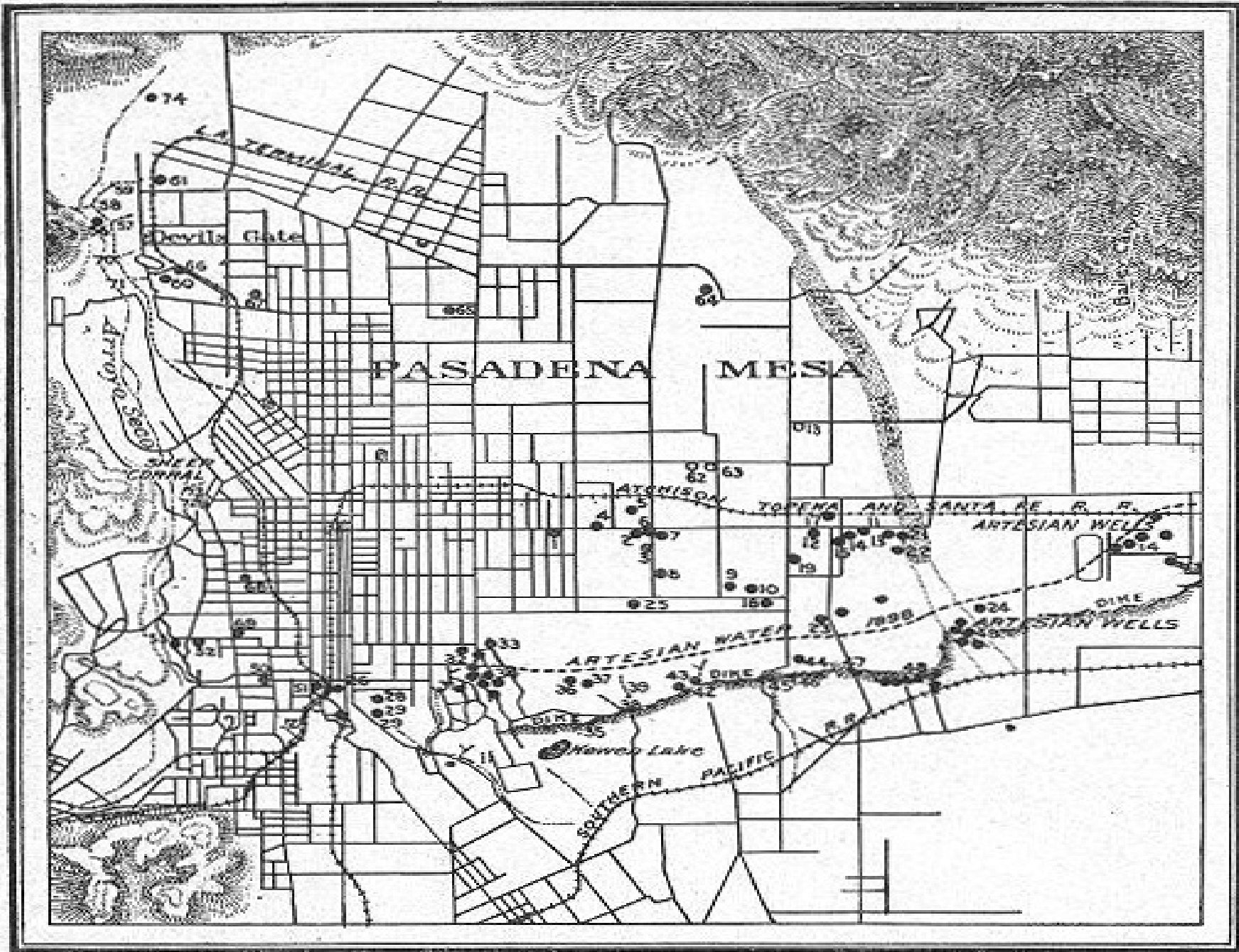
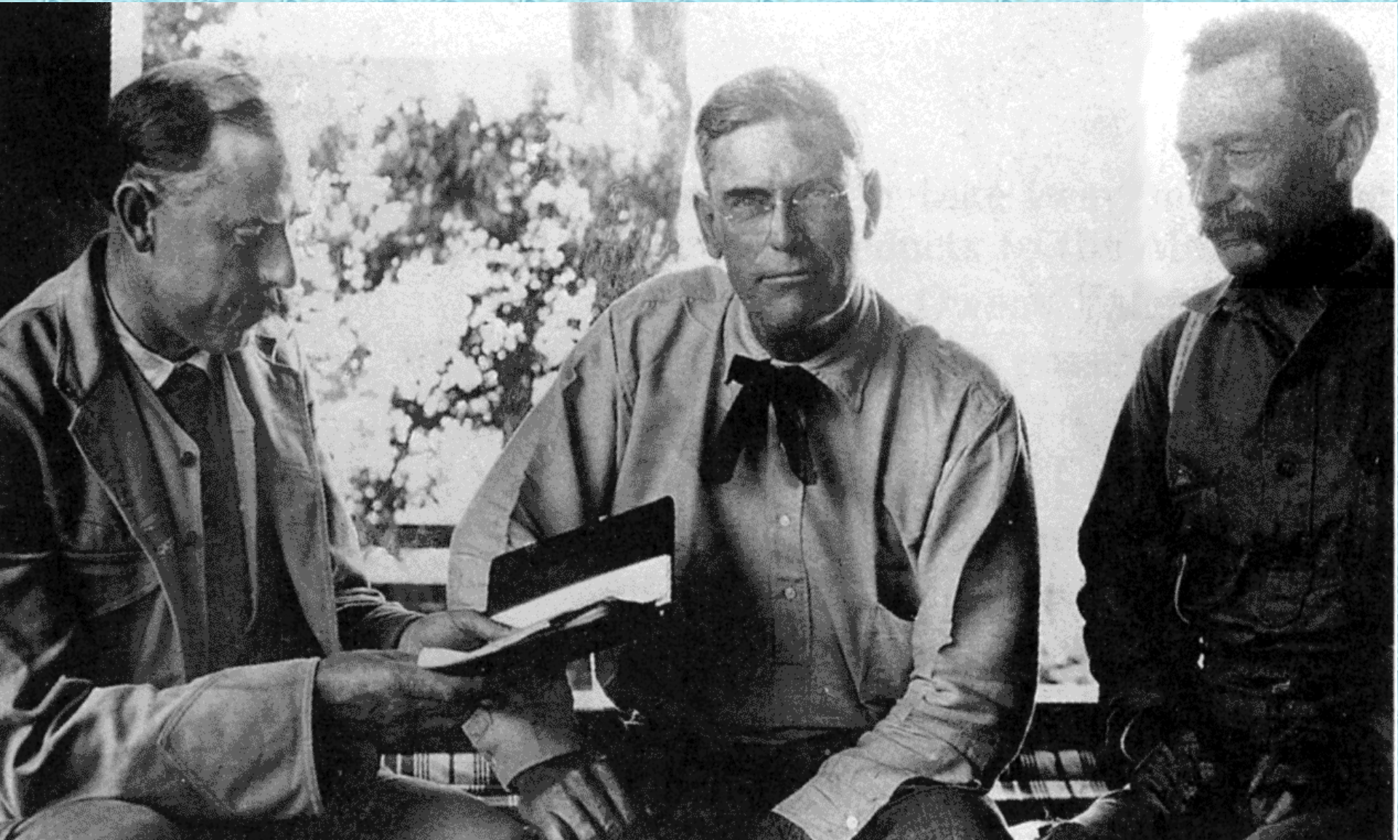


FIG. 217.—Map showing location of artesian wells in the vicinity of Pasadena, California.

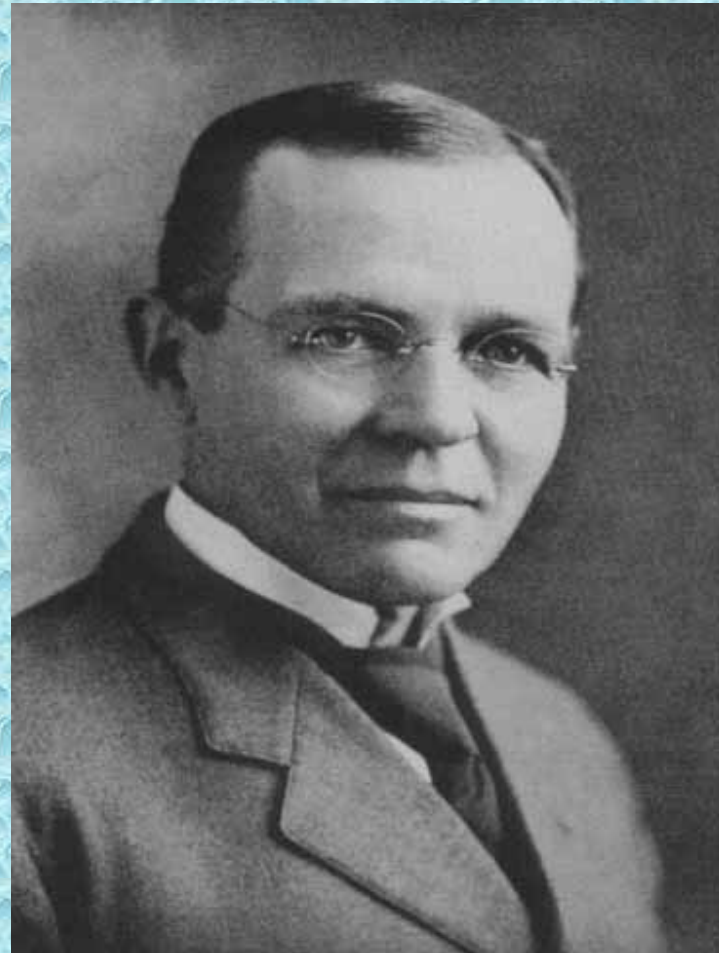
Joseph B. Lippincott



Municipal Water – 1898-1912

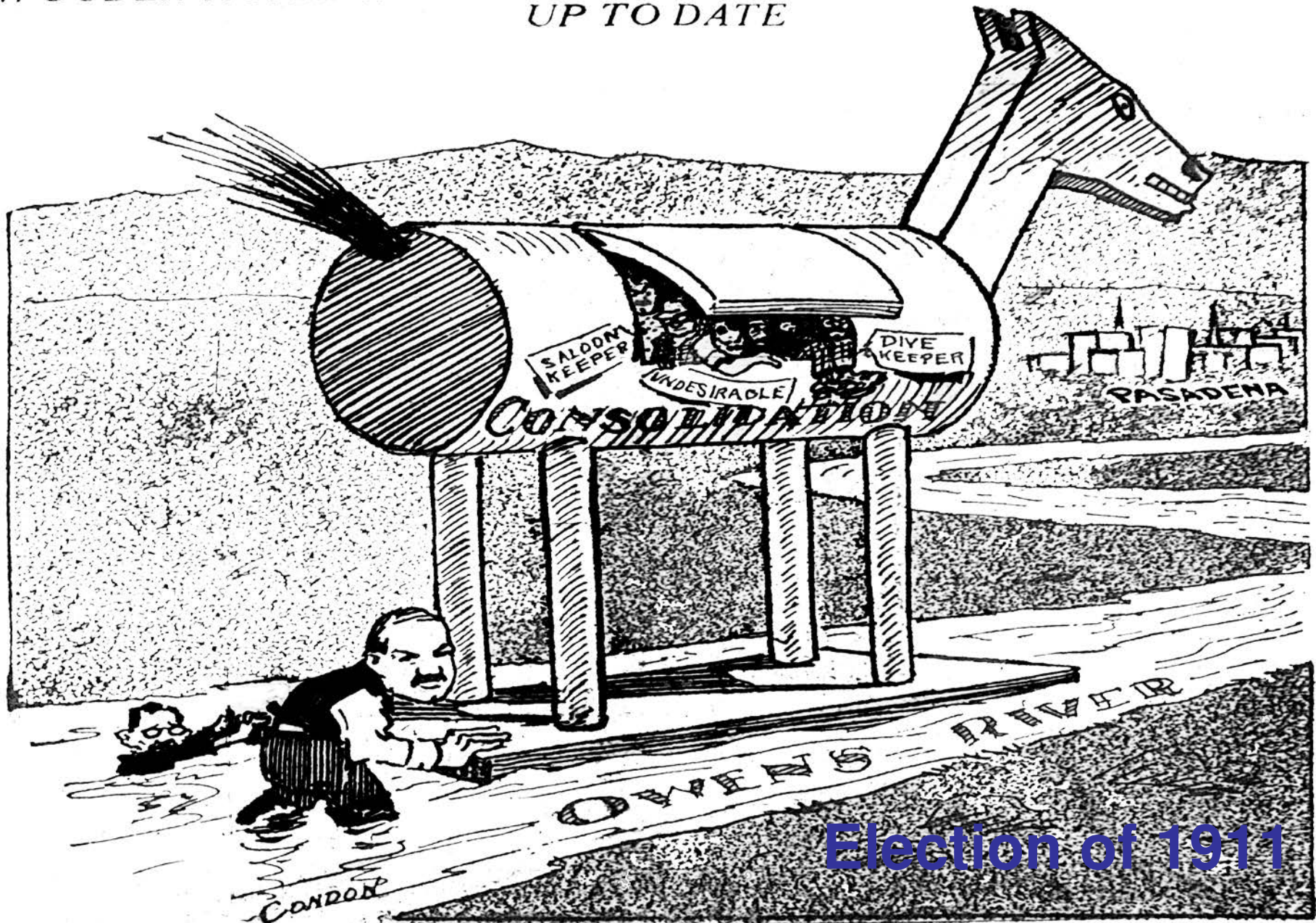


Captain William Waterhouse



William Thum

WOODEN HORSE WHICH HELPED DESTROY TROY BROUGHT
UP TO DATE

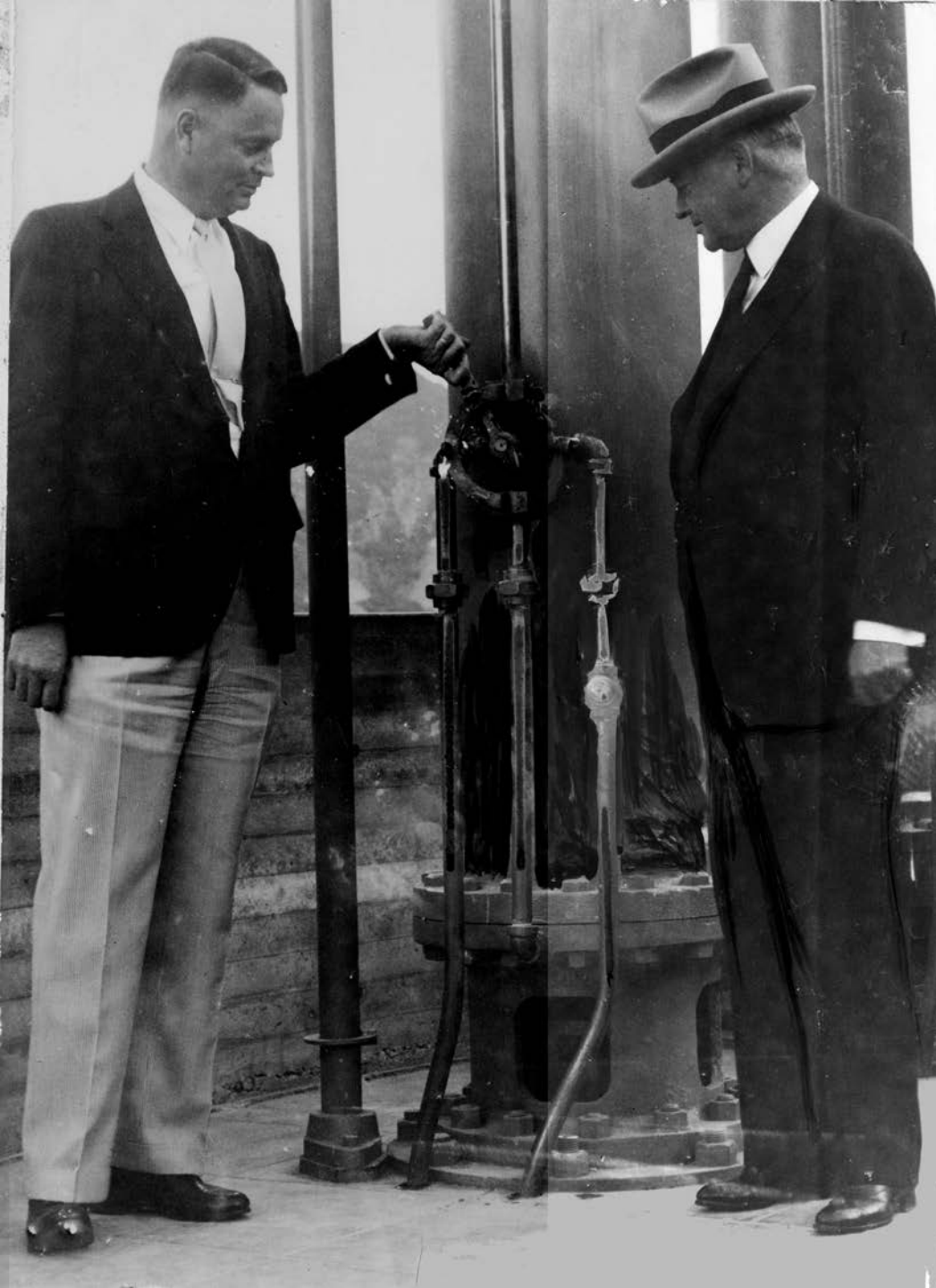


Election of 1911

When the Greeks besieged Troy they built a great wooden horse and by shrewd lies got the Trojans to open the gates of the city and take the horse inside. It was filled with Greek soldiers. At night the Greeks came out of the horse, opened the gates of the city and delivered it to the ravages of the invading Greek army.

The Search for New Water

- **San Gabriel River**
- **Colorado River**
- **Metropolitan Water District**
- **State Water Project**

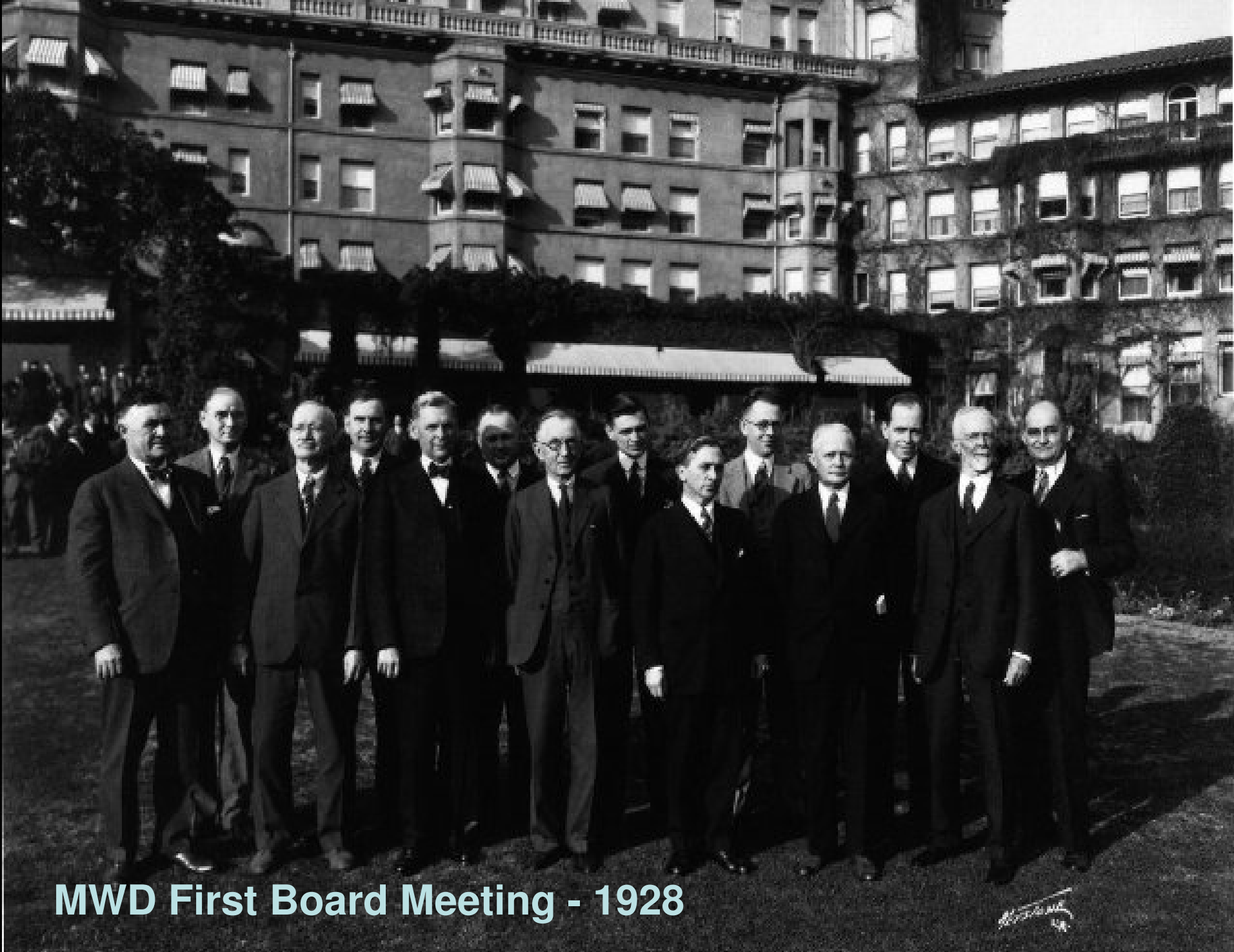


Samuel B. Morris

- Pasadena Water Department
- MWD
- Morris Dam
- Stanford Engineering
- Los Angeles DWP

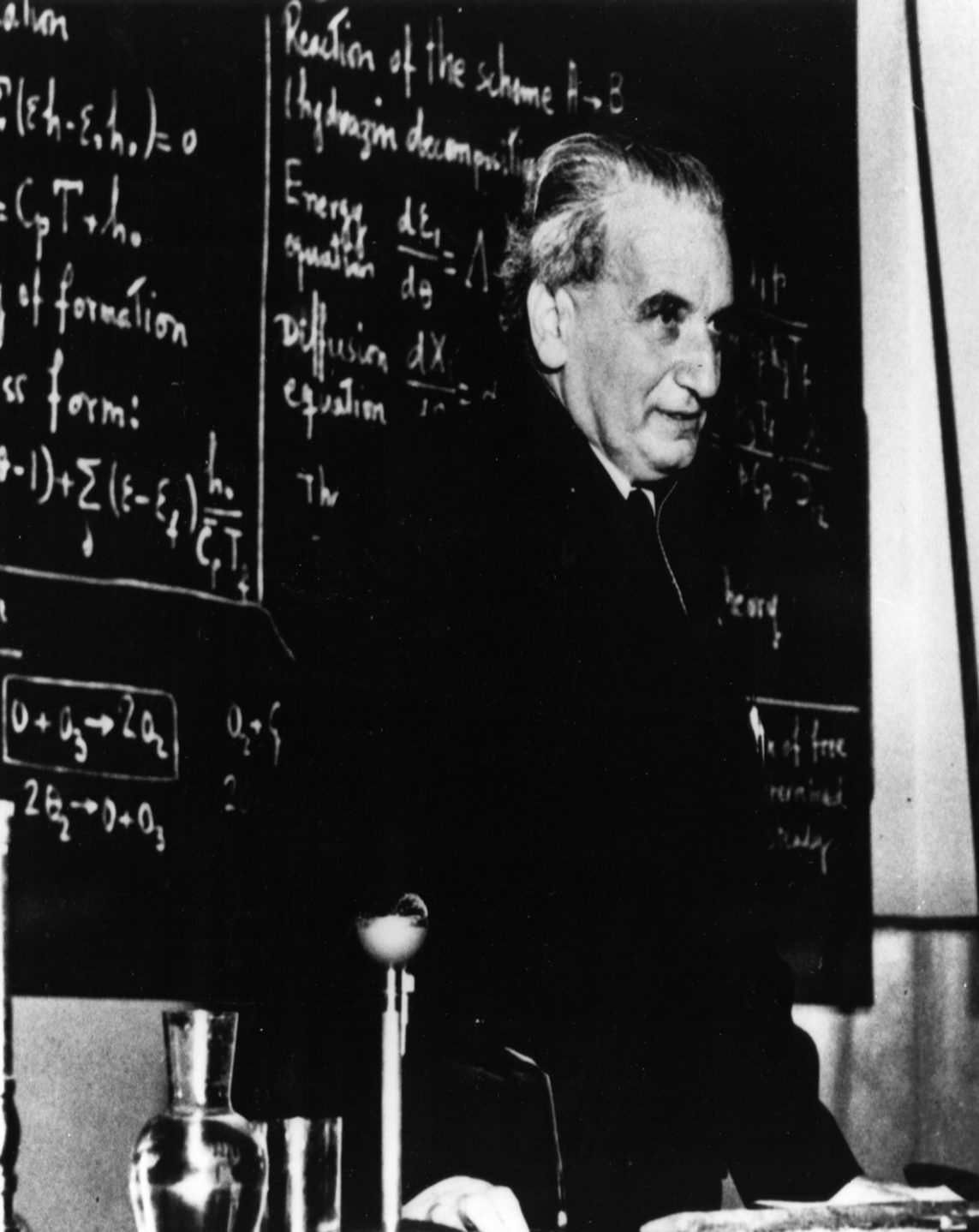


Hiram W.
Wadsworth
The Father of the MWD



MWD First Board Meeting - 1928

W. J. ...



Theodore von Kármán

- Father of Rocketry
- Hydraulics lab for Colorado River Aqueduct

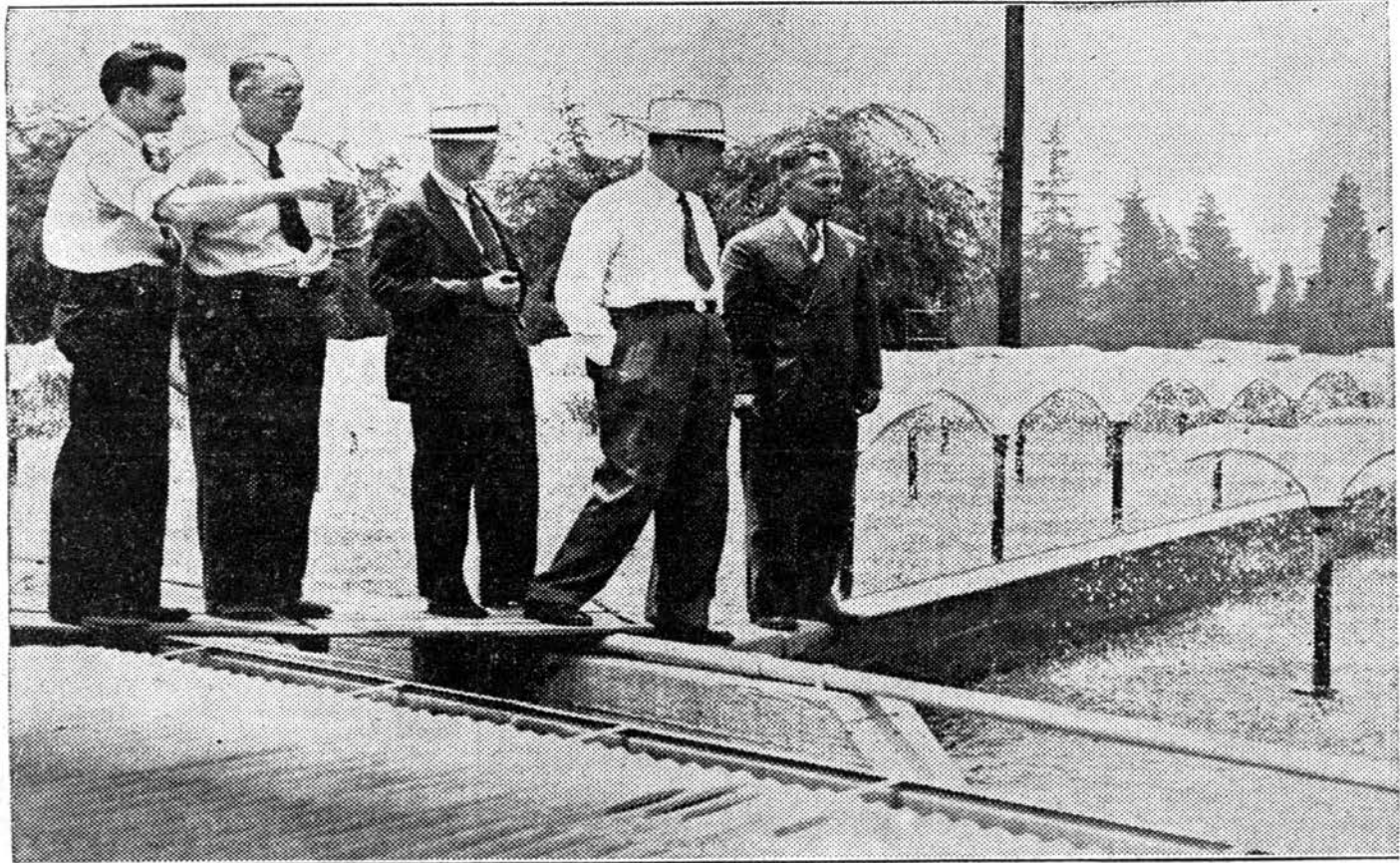


Franklin Thomas

PASADENA STAR-NEW

PART TWO—PASADENA, CALIFORNIA, WEDNESDAY, JUNE 18, 1941—PART TWO

Water from Distant Colorado River Pours Into City Distribution Mains



Officials watch aeration of Colorado River water at Sunset Reservoir. Left to right, William W. Aultman, water purification engineer of the Metropolitan Water District; H. P. Vail, distribution engineer of the district; C. W. Sopp, assistant chief engineer for Pasadena Water Department; Morris S. Jones, general manager of city department; H. S. Ross, assistant superintendent of city department.

RIVER SENDS CITY HUGE SUPPLY

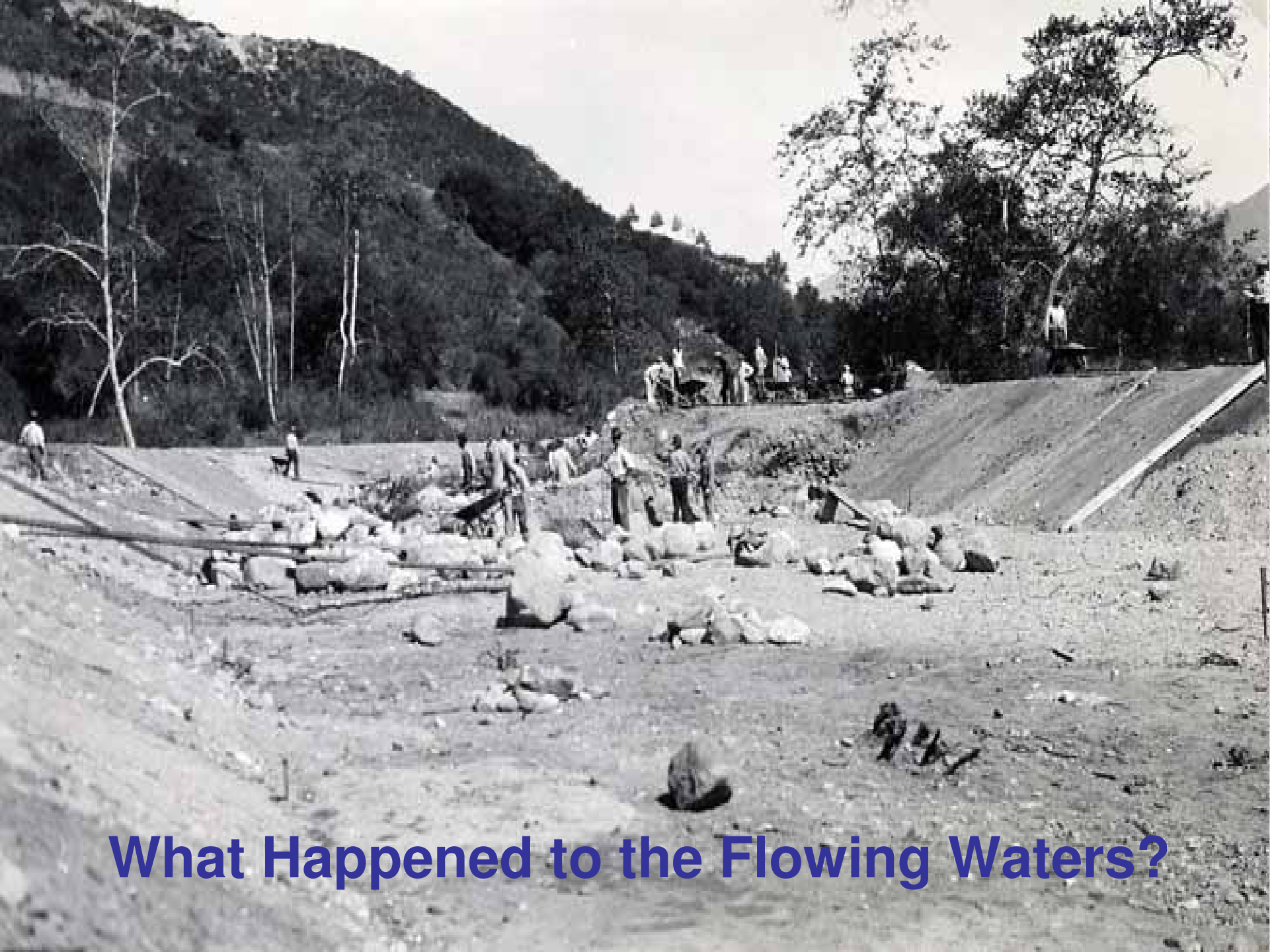
Reservoir Gets 10,000
Gallons a Minute

'FREE' PERIOD TO
END AUG. 18

Southern Section to
Test New Supply

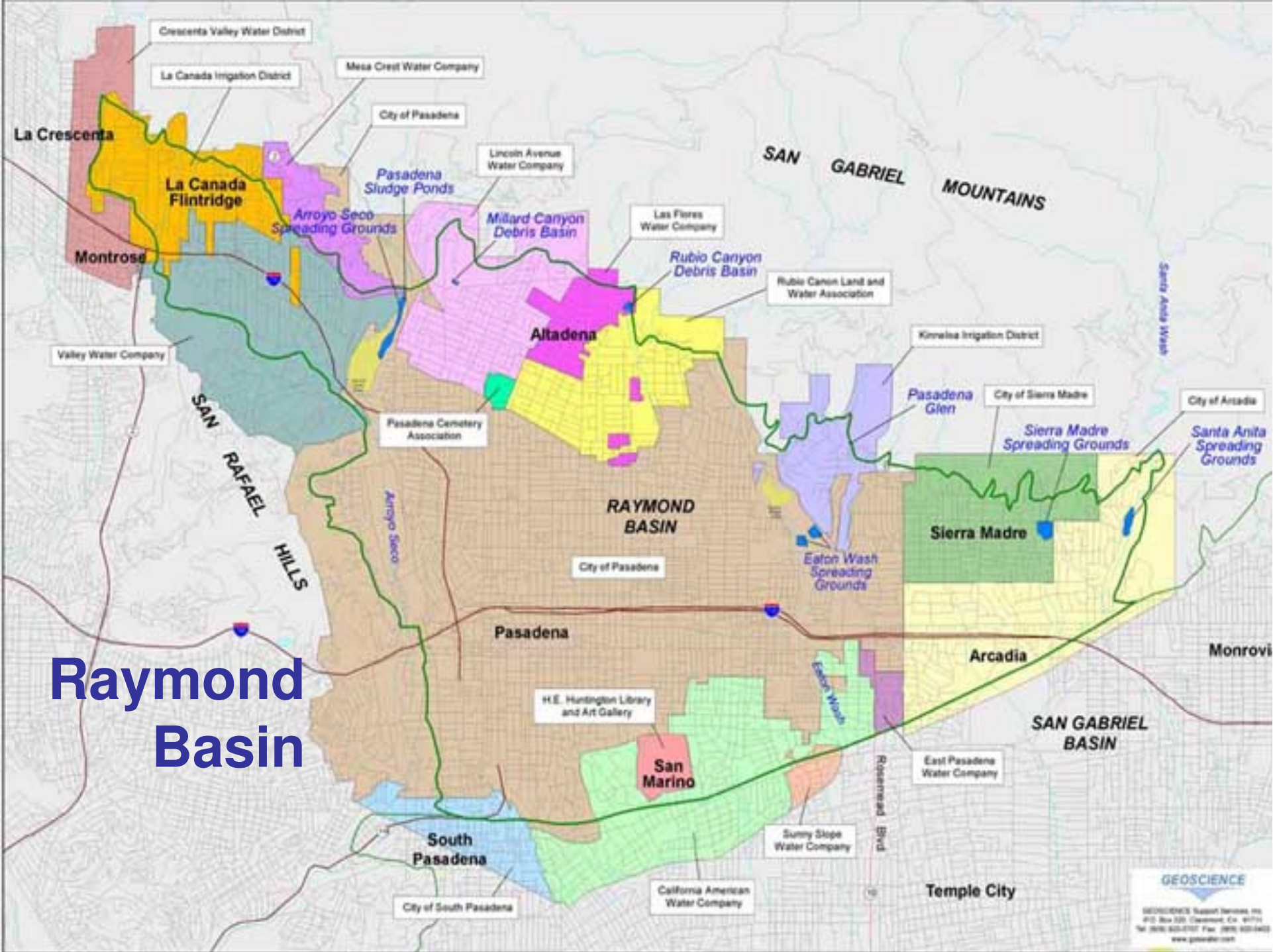
Filtered and softened Colorado River water at the rate of approximately 10,000 gallons a minute is pouring into the city's Sunset reservoir, and will continue to be received during the next two months. During this period the city will receive "free" water from the Metropolitan Water District of Southern California.

Upon completion of the "free" water period, ending Aug. 18, the Colorado River water will be used to supplement supplies pumped from the Pasadena underground basin and from local gravity sources. No further water will be taken from the Morris Dam in San Gabriel Canyon as it is to be trans-

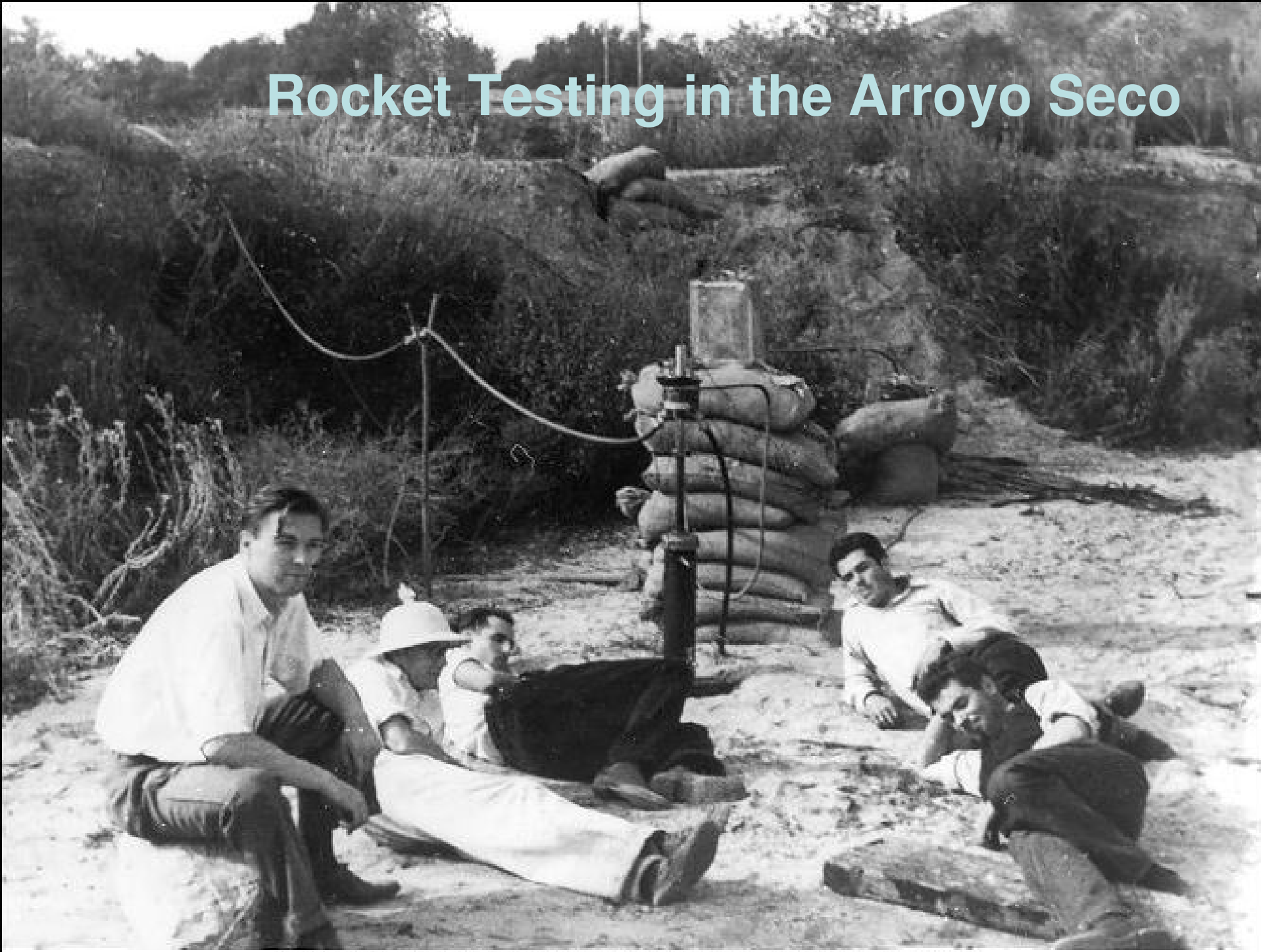


What Happened to the Flowing Waters?

Raymond Basin



Rocket Testing in the Arroyo Seco



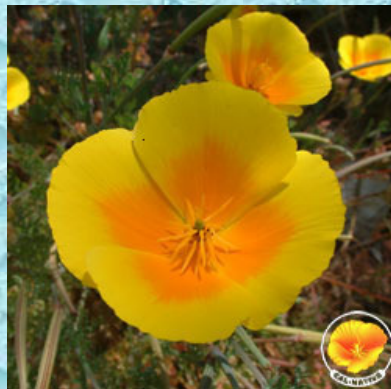


Contamination and Cleanup

Priorities for Today and Tomorrow

You can contribute positively by using water wisely:

- Reduce your daily water use by conservation
- Plant California Friendly Landscaping in your yard.
- Learn about important water issues like the CALFED Bay Delta Program
- Support efforts to protect and restore the Arroyo Seco Watershed



Plant California Friendly Landscapes

www.bewaterwise.com



Liquid Gold